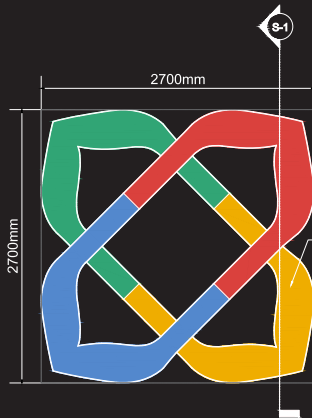


01 SIGNAGE MOUNTING LOCATION VIEW -
SHALIMAR SECONDARY SIGN

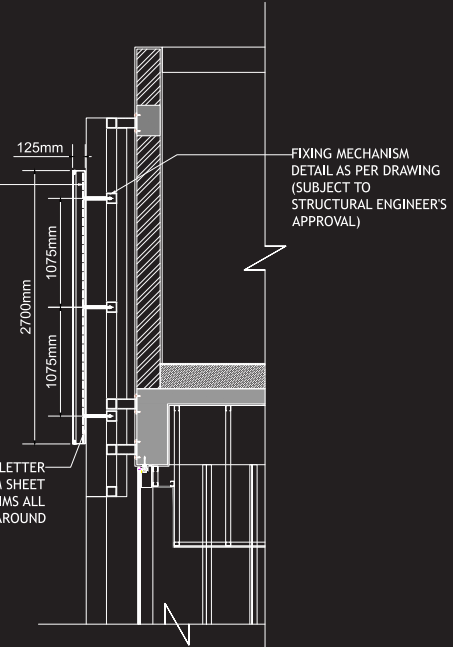


02 FRONT VIEW -
SHALIMAR SECONDARY SIGN

MONOGRAM TO BE MADE OF 3MM POWDER
COATED ALUMINUM SHEET
WITH WHITE 040 ACRYLIC (ASTARI)
FASCIA. 3M COLORED VINYL TO BE PASTED
ON THE ACRYLIC FASCIA LETTERS
RESPECTIVELY WITH 3MM PVC TRIMS ALL
AROUND. SIGNAGE TO BE ILLUMINATED
USING OSRAM LED MODULES

OSRAM LED MODULES WITH
MEANWELL SMPS FOR
LIGHTING

ALUMINUM CHANNEL LETTER
MADE OF 3MM ALUMINUM SHEET
WITH 3MM PVC TRIMS ALL
AROUND



03 SIDE SECTION (S1) VIEW -
SHALIMAR SECONDARY SIGN

NOTE:

- 1-CLIENT TO GET THE STRUCTURAL DRAWING APPROVED FROM A REGISTERED STRUCTURAL CONSULTANT
- 2- POWER POINT REQUIRED FOR LIGHT. LIGHTING CONSULTANT TO RECOMMEND THE LIGHTING FIXTURE DETAIL
- 3-CONTRACTOR TO TAKE A DIMENSION OF EXACT LOCATION FOR INSTALLATION ALONG WITH CLIENT/SUPERVISOR AT SITE